

Quick Start - RockWorks15, Single License

Installing RockWorks15

You must have **Administrator** privileges to **install and license** RockWorks.

Installing from the Internet (recommended)

1. Visit www.rockware.com and click on the **Downloads / Product Updates** menu item, along the top of the page.
2. Click on **RockWorks** in the contents list. Locate the **RockWorks15** item and click the small **Download** link below RockWorks15.
3. Choose **Save** when prompted, and browse to a location on your computer where the download can be stored, such as your computer's Desktop. You cannot run the installation from the web.
4. When the download is complete, you can click the **Run** button in the browser prompt (or use Windows Explorer to double-click on the downloaded file, "rockworks15_installation.exe") to start the installation. Follow the recommended installation settings; be sure to read and respond to the license agreement.

- or - Installing from a CD

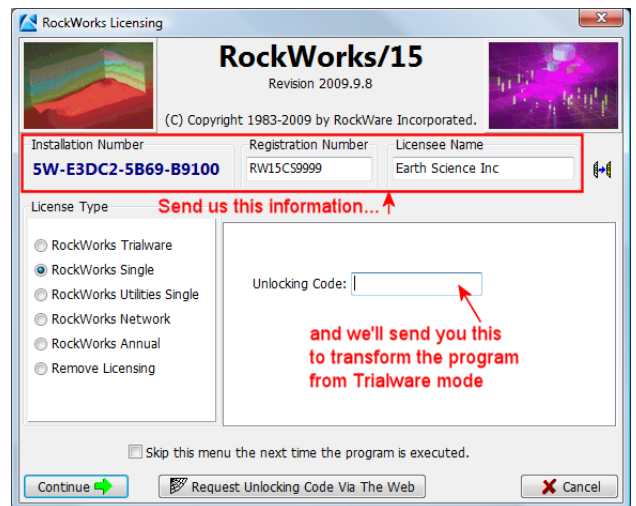
1. Insert the CD into your computer. The installation program should start up automatically. (If it does not, run the "setupcd" program in the root of the CD.)
2. Click on "RockWorks15" in the installation program's menu, along the left side of the screen. You'll see a description of the program in the pane to the right. Click the **Install Software** button in the pane to the right to start the installation.
3. Follow the recommended installation settings. Be sure to read and respond to the license agreement.

Licensing RockWorks15

When installation is complete, you'll see the licensing screen. First, here are some terms you'll need to understand:

- **Installation Number:** A set of numbers and characters that the program itself creates the first time it is started up. It can be found on the RockWorks Licensing screen.
- **Registration Number:** A set of numbers/letters assigned to you when you purchase a license of RockWorks. It is emailed to you after purchase, or is affixed to your book and CD, and is used to verify your ownership of the license.
- **Licensee Name:** Your name or your company's name.
- **Unlocking Code:** A set of numbers that you obtain from RockWare to transform the software from Trial mode to Full Use mode. RockWare computes the **Unlocking Code** based on your **Registration Number** and the **Installation Number**.

1. Specify what you are licensing: Choose the **RockWorks Single** option.
2. Make note of the **Installation Number** you see above the license types.
3. Now, go online to do two things:
 - Register your license: Visit www.rockware.com and click Support / Register Software. You will need to supply the **Registration Number** and your contact information.
 - Obtain your unlocking code: Visit www.rockware.com and click Support / Unlock Software. You will need to supply the **Registration Number**, the **Installation Number**, and your contact information. We will reply within one business day with the unlocking code.
4. Unlock the program: When you receive your unlocking code from RockWare, start up RockWorks and fill in the Unlock window prompts – **Licensee Name**, **Registration Number**, and **Unlocking Code** - as described above. (Note: If there's a time lag until you receive the unlocking code, you can go ahead and use the program in trial mode – click **RockWorks Trialware** and you'll have 15 days or 50 sessions of full use.)
5. Click the **Continue** button. You will be notified if the licensing was successful. The RockWorks program window will be displayed, along with the RockWorks Help messages.
6. We recommend you take the time to go through a few of the tutorial lessons, by clicking on the **Tutorial** button at the top of the Help window.



Getting Help

- Level 1: Refer to the **Instructions** tab which is displayed in each program options window.
- Level 2: Run through the **Tutorial** lessons in the online Help window which is displayed upon program start and via the Help / Tutorial menu.
- Level 3: Select the Help/Contents menu option to access the **Help messages** for RockWorks.
- Level 4: Access our **website**, using the automatic links in the RockWorks Help / Online Information options. Or, simply go to www.rockware.com and click on the Support / Rockworks items. While there, you can search topics, and read case studies and white papers.
- Level 5: Join the online **support forum** where users post questions and answers. This is available via the Support page mentioned above.
- Level 6: Refer to the **manual**, but note that it is a small subset of the on-line help.
- Level 7: Contact our **technical support staff** at 303-278-3534, or email us at tech@rockware.com.